

**Results of the German organic movement's monitoring
programme of copper applications
& implications on copper minimization strategy**

*Jutta Kienzle, Eckhard Reiners, Barbara Hoffmann,
Wolfgang Patzwahl, Florian Weihrauch*

Part III: Wine

Barbara Hoffmann

Organic Viticulture: Data Base

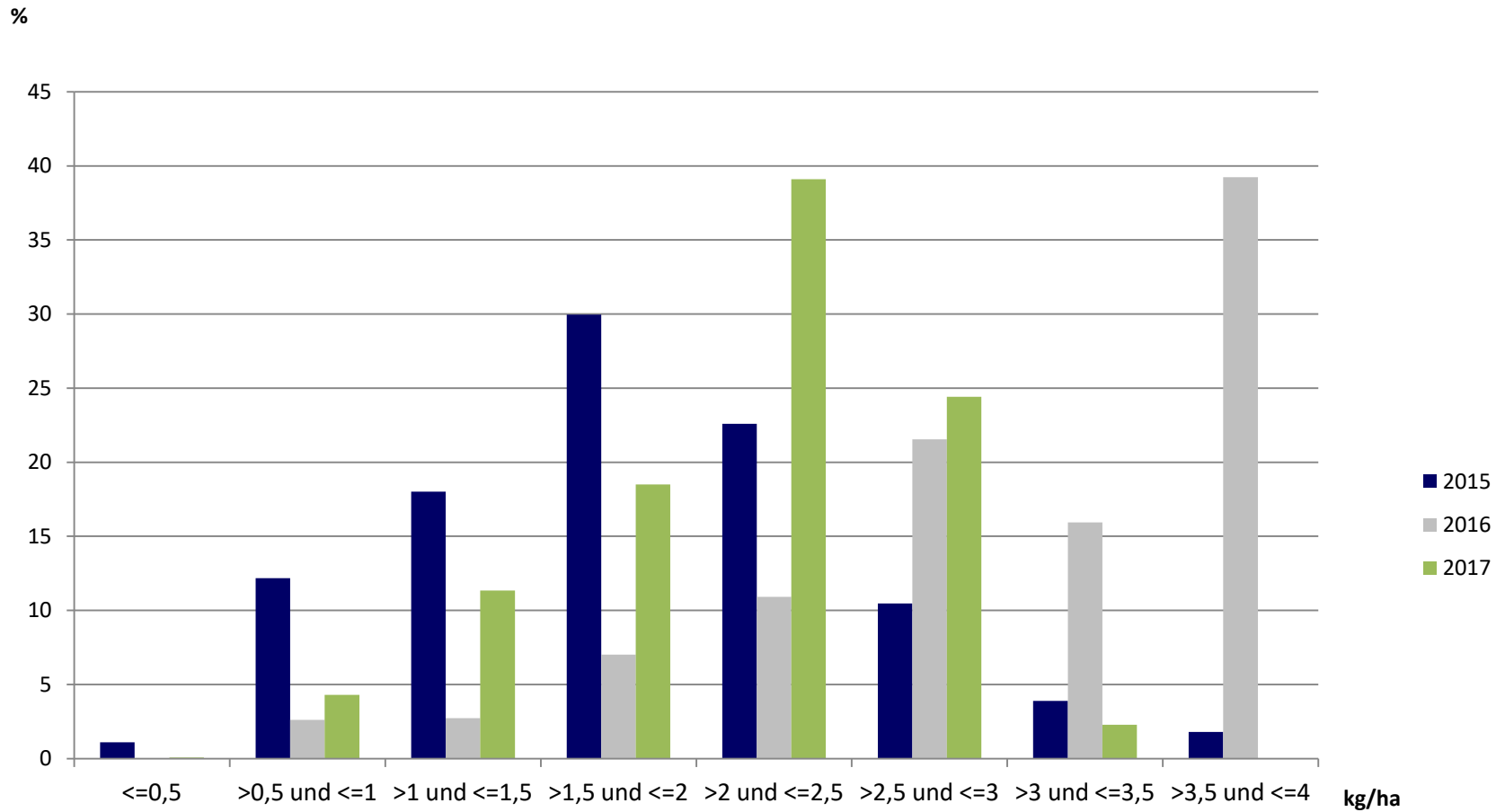
	2015	2016	2017
Total area in Germany in ha*	ca. 8.100	ca. 8.000	ca. 7.300
Therefrom included in monitoring in ha	3027	1845	3284
Percentage of the total area	37%	23%	45%
With copper treated vine area in ha	2702	1740	2905

*Quelle: BÖLW

Copper Application Rate in Organic Viticulture 2015-2017

	2015	2016	2017
Average amount of Cu in kg/ha related to the treated vine area	1,85	3,20	2,13

Distribution of the Copper Application-Rate in relation of the treated vine area in %

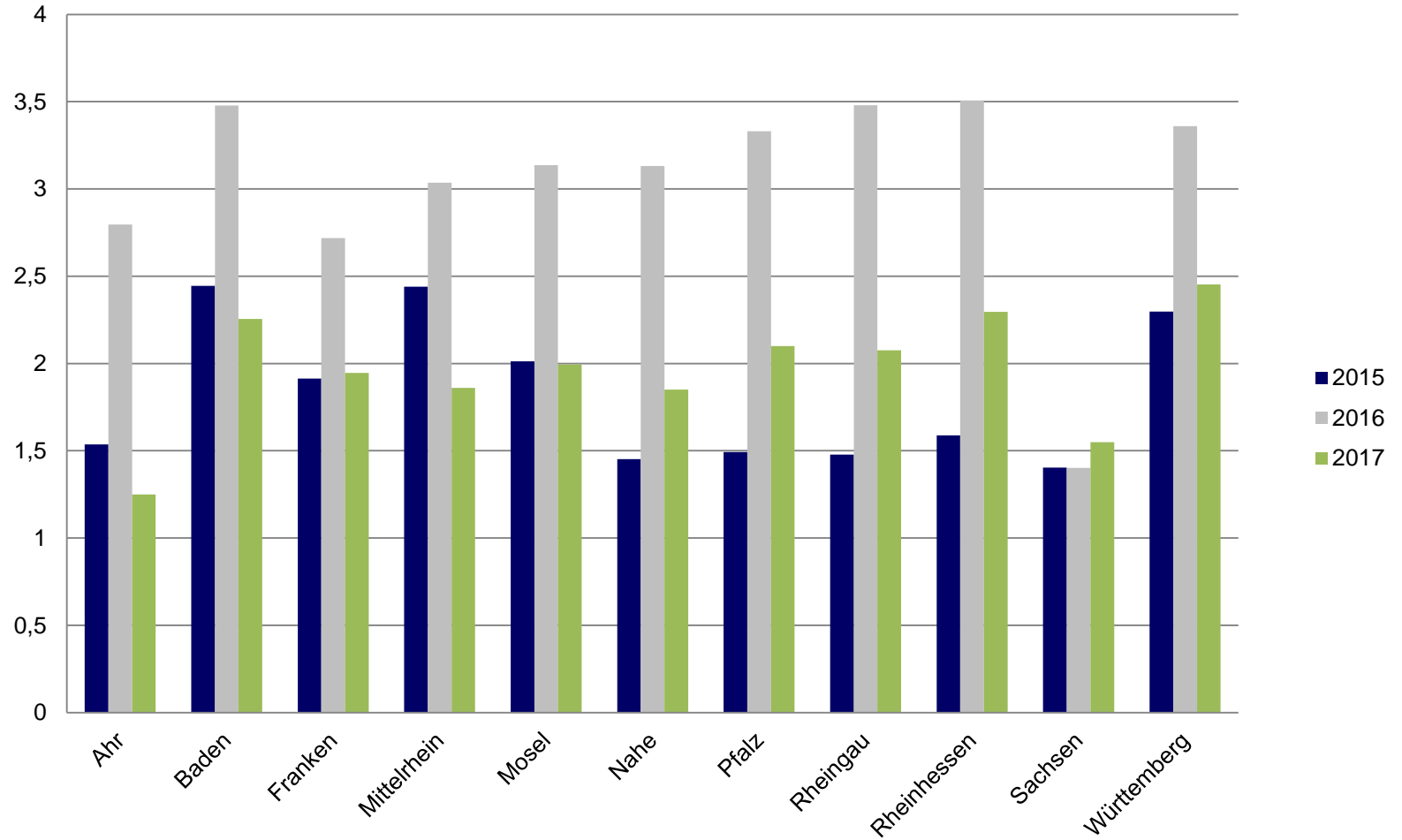


Quantity of the evaluated wineries in relation of the area of cultivation

Anbaugebiet	2015	2016	2017
Ahr	2	2	2
Baden	59	59	57
Franken	4	4	9
Mittelrhein	4	4	5
Mosel	27	28	31
Nahe	11	11	14
Pfalz	17	18	20
Rheingau	10	10	13
Rheinhessen	39	38	39
Sachsen	1	1	1
Württemberg	11	18	21
Summe	185	193	212

Average copper application-rate in kg/ha per vine area

kg/ha



Need for action in organic viticulture

- Clarification of the admission of saure Tonerden and Kaliumphosphonat
- Optimization of the use of copper, plant health care strategies, other alternatives and synergists
- PIWI: cultivation of new varieties, carry on the research for new varieties, make them popular